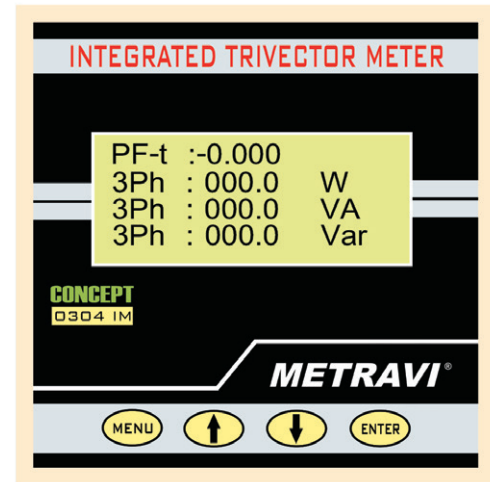


GENERAL SPECIFICATIONS

- DSP & Microcontroller Based.
- Accuracy 0.5%, Autoranging.
- Displays three phase Parameters in a single window.
- 3-Ph 3-Wire & 3-ph 4-Wire Settings.
- Easy User interface with at site programming of CT & PT ratios.
- RS 232 PC connectivity (Optional).
- Displays 3 Phase Parameters: Volts, Amps, Active / Apparant / Reactive Power and Energy, Power Factor, Demand and Maximum demand, Frequency & Real time clock.



SPECIFICATIONS

PARAMETER	RANGE	RESOLUTION	ACCURACY
VOLTS	20.00V – 999.99V 1.00KV – 999.99KV	0.01 V 0.01 KV	0.5% of F.S. +/- 10 Dgts
CURRENT	0.05A – 9999.99A	0.01 A	0.5% of F.S. +/- 10 Dgts
POWER FACTOR	0.200Lg-0.200Ld	0.001	+/-0.02 of Rdng at F.L.
ACTIVE POWER	0.200Lg-0.200Ld 1.00KW – 999.99KW 1.00MW – 999.99MW	0.1 W 0.01 KW 0.01 MW	0.5% of F.S. +/- 10 Dgts
APPARANT POWER	0.00VA – 999.9VA 1.00KVA – 999.99KVA 1.00MVA – 999.99MVA	0.01 MW 0.01 KVA 0.01 MVA	0.5% of F.S. +/- 10 Dgts
REACTIVE POWER	0.00VAr – 999.9VAr 1.00KVAr – 999.99KVAr 1.00MVAr – 999.99MVAr	0.1 VAr 0.01 KVAr 0.01 MVAr	0.5% of F.S. +/- 10 Dgts
ENERGY	0 - 99999999.99 KWh 0 - 99999999.99 KVAh 0 - 99999999.99 KQh	0.01 KWh 0.01 KVAh 0.01 KQh	0.5% of F.S. +/- 10 Dgts 0.5% of F.S. +/- 10 Dgts 0.5% of F.S. +/- 10 Dgts
FREQUENCY	45.00–65.00 Hz	0.01 Hz	0.01 +/- 0.02 of Rdng
PHASE ANGLE	0— +/- 90 Deg	0.1 Deg	+/- 2 Deg

KVAh is denoted as KQh.

* All accuracy as above is specified at 50Hz.

Auxilliary Control power: Either 230V, 50Hz or 110V, 50Hz (Any one as per order)

- **Dimensions** : 96mm(height) x 96mm(width)x85mm(depth)
- **Cutouts** : 92mm(height) x 92mm(width)
- **Weight** : 400 gms (Approx)
- **Enclosure** : ABS Plastic, polycarbonate faceplate overlay
- **Environmental** : Operating Temperature: 10 ~ 70 Deg C.
- **Relative Humidity** : Max. 95% Non Cond.

SCREEN SHOTS

Voltage(L-N): VOLTAGE [L-N] R : 000.00 V Y : 000.00 V B : 000.00 V	Voltage(L-L): VOLTAGE [L-L] RY : 000.00 V YB : 000.00 V BR : 000.00 V	Current: PHASE CURRENTS R : 000.00 A Y : 000.00 A B : 000.00 A
Power Factor: VOLTAGE [L-N] R : 000.00 V Y : 000.00 V B : 000.00 V	Active Power: ACTIVE POWER R : 000.0 W Y : 000.0 W B : 000.0 W	Apparant Power: APPARANT POWER R : 000.0 VA Y : 000.0 VA B : 000.0 VA
Reactive Power: REACTIVE POWER R : 000.0 VAr Y : 000.0 VAr B : 000.0 VAr	System PF & Power: PF-t :-0.000 3Ph : 000.0 VA 3Ph : 000.0 W 3Ph : 000.0 Var	Energy & Freq.: 00000000.00 KWh 00000000.00 KVAh 00000000.00 KQh 00.00 Hz
Dmd & Max. Dmd.: Dmd : 000.0 W Dmd : 000.0 VA Max : 000.0 W Max : 000.0 VA	Phase Angle: PHASE ANGLE R : + 90.0 Deg Y : + 90.0 Deg B : + 90.0 Deg	RTC & CTR/PTR: 16/03/10 13:08 Ctr : 500:5A Ptr : 110:110V

**Specifications and features are subject to change without prior notice.

*Technical Specifications & Appearance are subject to change without prior notice